

DF-4 30 Inch
Gas Train
10/09/2012

BILL OF MATERIALS

ITEM NUMBER	Description	Quantity
1	1-1/4" Quick Seal	1
2	1-1/4" x 4-1/2" Nipple	1
3	1-1/4" 90° Elbow	3
4	1-1/4" Close Nipple (1-1/2")	5
5	1-1/4" Union	3
6	1-1/4" x 1-1/4" x 1/2" Tee	3
7	-5-15 w.c. Gas Pressure Gauge	1
8	1-1/4" x 2" Nipple	5
9	1-1/4" K3A672T Solenoid Valve	1
10	1-1/4" V4055A1007 Hydraulic Actuator and V5055A1012 Valve	1
11	Maxitrol 1-1/2" MR212D Modulating Valve	1
12	1-1/4" Manual Ball Valve	1
13	1-1/4" x 11" Nipple	1
14	1-1/4" x 8" Nipple	1
15	1-1/4" x 2-1/2" Nipple	1
16	1-1/4" Female x 2" Male Adapter	1
17	30" Dual Fuel Midco Burner	1
18	1/4" Brass Elbow	1
19	3/8" Male x 1/4" Female Reducer	1
20	325-3x3/8 Pilot Gas Regulator	1
21	3/8" 90° Elbow	1
22	3/8" Close Nipple (1-1/2")	1
23	3/8" x 2-1/2" Nipple	2
24	3/8" Pilot Shut Off Valve	1
25	1/2" Male x 3/8" Female Reducer	1
26	1-1/4" 90° Street Elbow	1
27	1-1/2" Male x 1-1/4" Female Reducer	2
28	1/2" Male x 1/4" Female Reducer	2
29	0-35" w.c. or 0-5 psi or 0-15 psi Pressure Gauge (check spec)	1

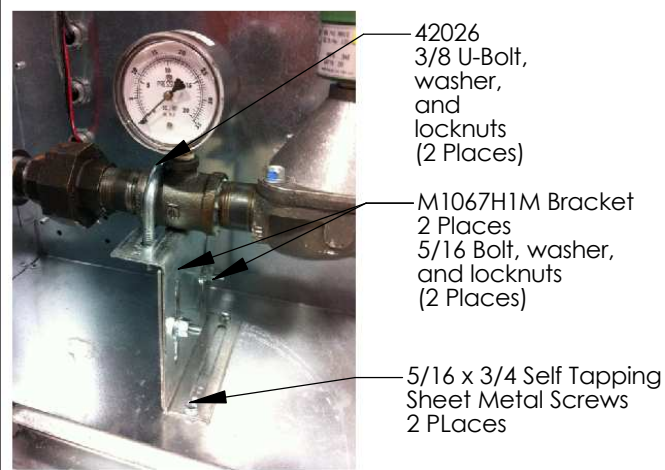
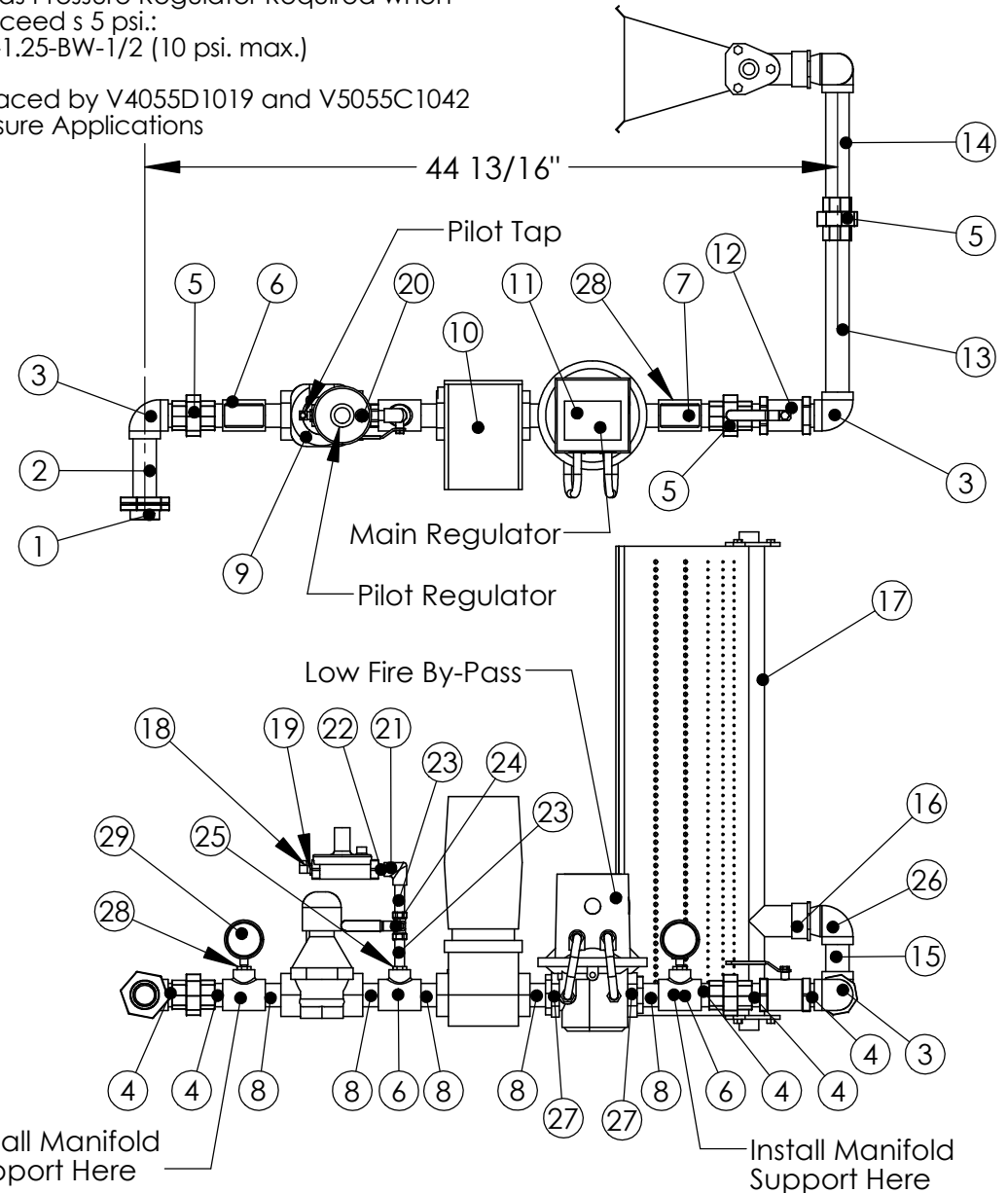
Standard Gas Train

NOTES:

Gas Type: Natural or LP
 Inlet Pressure: 7 in. w.c. - 5 psi.
 Max. Natural Gas Manifold Pressure: 5 in. w.c.
 Max. LP Manifold Pressure: 2.5 in. w.c.

External High Gas Pressure Regulator Required when gas pressure exceeds 5 psi.
 P/N = 143-80-2-1.25-BW-1/2 (10 psi. max.)

Item #10 is replaced by V4055D1019 and V5055C1042 for Proof of Closure Applications



Material: N/A
 Blank Size: N/A x N/A
 Weight: N/A lbs

Part Number: N/A
 MACOLA/AX Number:
 Drawing Name: DF 4 30 Gas Train
 Drawn By: WBG
 Parent Assembly: DF 4
 Sheet: 2 of 5

Unless Otherwise Specified
 Dimensions are in Inches.
 Standard Tolerances are:
 Fractions: ±1/16
 Decimal: .XX ±.05
 .XXX ±.015
 Angles: ±1°

CONFIDENTIAL

BILL OF MATERIALS

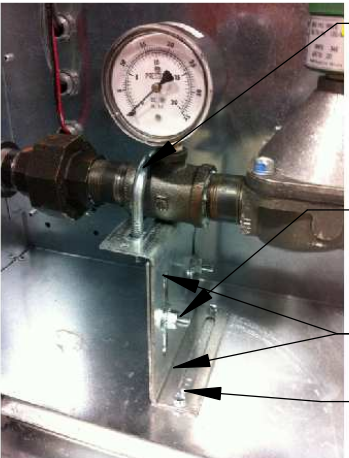
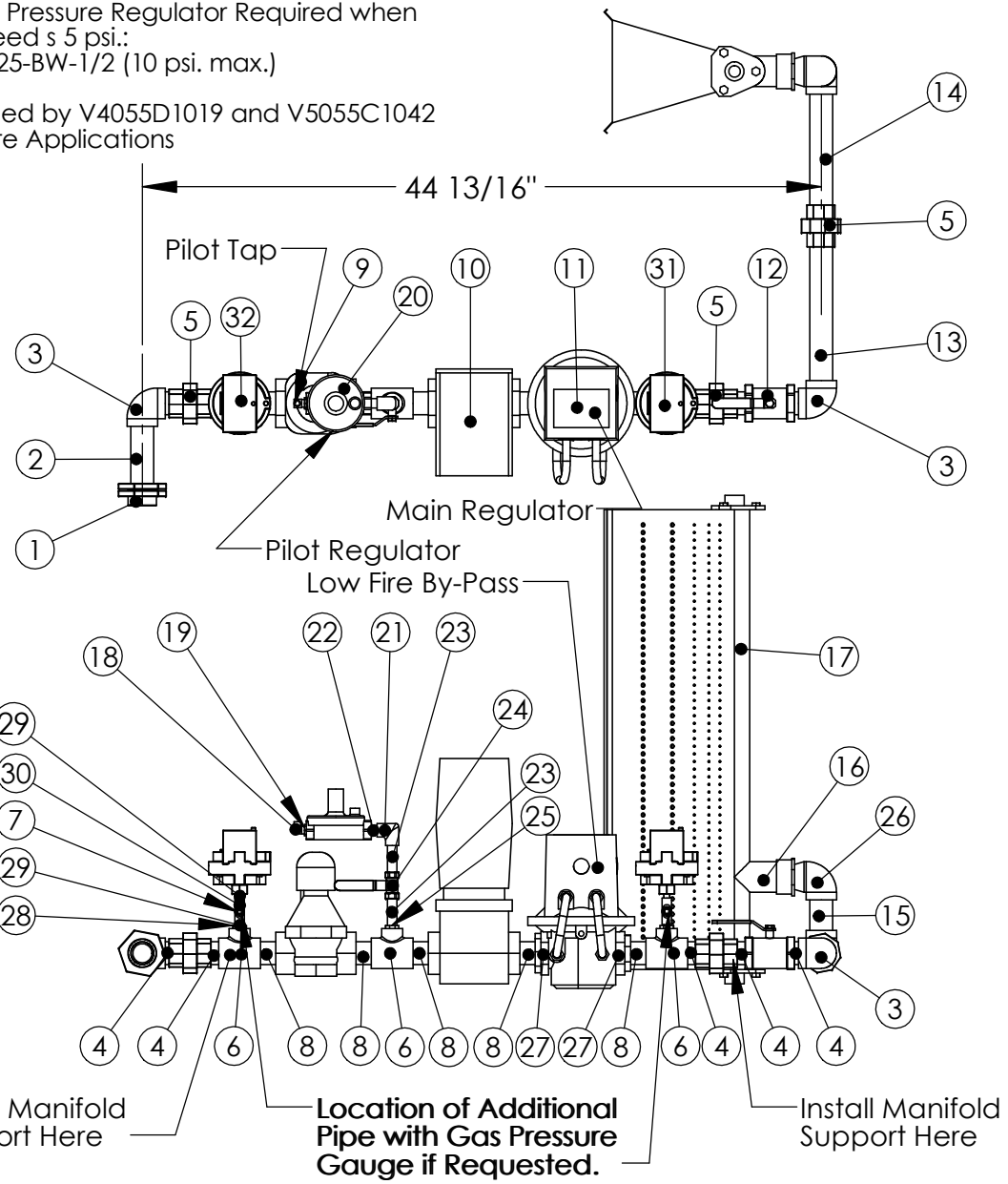
ITEM NUMBER	Description	Quantity
1	1-1/4" Quick Seal	1
2	1-1/4" x 4-1/2" Nipple	1
3	1-1/4" 90° Elbow	3
4	1-1/4" Close Nipple (1-1/2")	5
5	1-1/4" Union	3
6	1-1/4" x 1-1/4" x 1/2" Tee	3
7	1/4" Square Head Pipe Plug	2
8	1-1/4" x 2" Nipple	5
9	1-1/4" K3A672T Solenoid Valve	1
10	1-1/4" V4055A1007 Hydraulic Actuator and V5055A1012 Valve	1
11	Maxitrol 1-1/2" MR212D Modulating Valve	1
12	1-1/4" Manual Ball Valve	1
13	1-1/4" x 11" Nipple	1
14	1-1/4" x 8" Nipple	1
15	1-1/4" x 2-1/2" Nipple	1
16	1-1/4" Female x 2" Male Adapter	1
17	30" Dual Fuel Midco Burner	1
18	1/4" Brass Elbow	1
19	3/8" Male x 1/4" Female Reducer	1
20	325-3x3/8 Pilot Gas Regulator	1
21	3/8" 90° Elbow	1
22	3/8" Close Nipple (1-1/2")	1
23	3/8" x 2-1/2" Nipple	2
24	3/8" Pilot Shut Off Valve	1
25	1/2" Male x 3/8" Female Reducer	1
26	1-1/4" 90° Street Elbow	1
27	1-1/2" Male x 1-1/4" Female Reducer	2
28	1/2" Male x 1/4" Female Reducer	2
29	1/4" Close Nipple (1")	4
30	1/4" x 1/4" x 1/4" Tee	2
31	Optional Antunes HGP-A M1 Pressure Switch	1
32	Optional Antunes LGP-A M1 Pressure Switch	1

Gas Train w/Pressure Switch

NOTES:
 Gas Type: Natural or LP
 Inlet Pressure: 7 in. w.c. - 5 psi.
 Max. Natural Gas Manifold Pressure: 5 in. w.c.
 Max. LP Manifold Pressure: 2.5 in. w.c.

External High Gas Pressure Regulator Required when gas pressure exceeds 5 psi:
 P/N = 143-80-2-1.25-BW-1/2 (10 psi. max.)

Item #10 is replaced by V4055D1019 and V5055C1042 for Proof of Closure Applications



- 42026 3/8 U-Bolt, washer, and locknuts (2 Places)
- 5/16 Bolt, washer, and locknuts (2 Places)
- M1067H1M Bracket 2 Places
- 5/16 x 3/4 Self Tapping Sheet Metal Screws 2 Places

Material: N/A
 Blank Size: N/A x N/A
 Weight: N/A lbs

Part Number: N/A
 MACOLA/AX Number:
 Drawing Name: DF 4 30 Gas Train
 Drawn By: WBG
 Parent Assembly: DF 4
 Sheet: 3 of 5

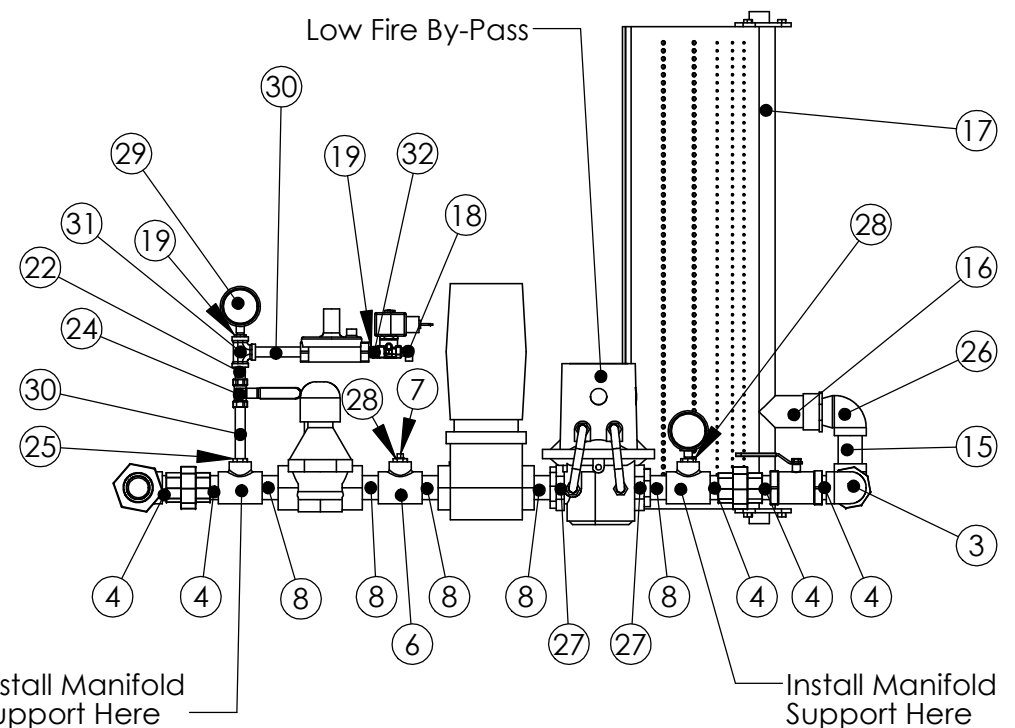
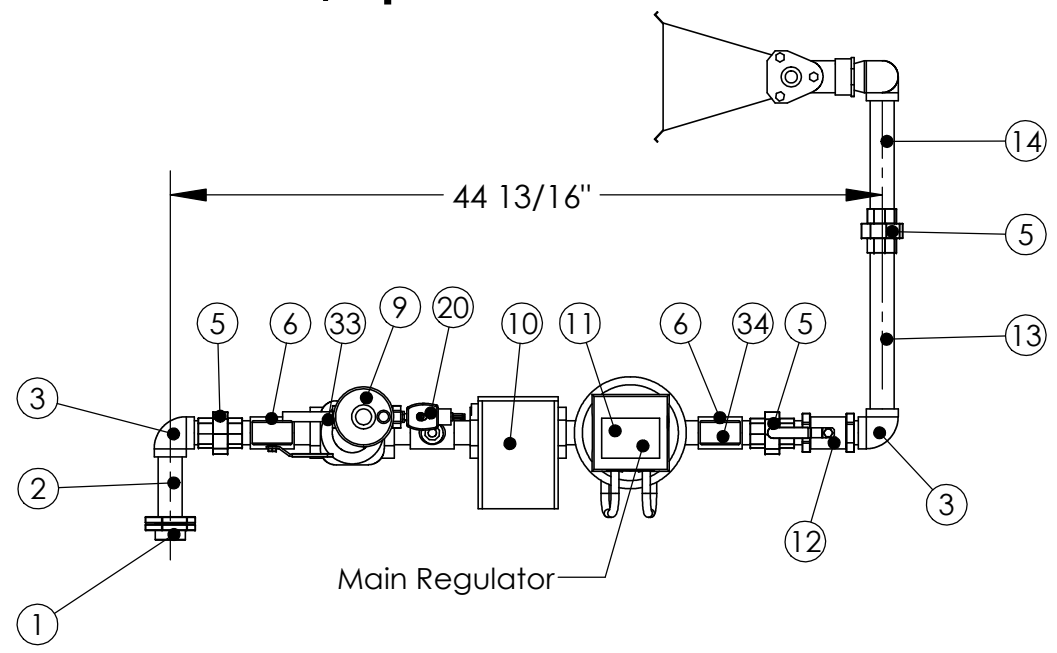
Unless Otherwise Specified Dimensions are in Inches.
 Standard Tolerances are:
 Fractions: ±1/16
 Decimal: .XX±.05
 .XXX±.015
 Angles: ±1°

CONFIDENTIAL

BILL OF MATERIALS

ITEM NUMBER	Description	Quantity
1	1-1/4" Quick Seal	1
2	1-1/4" x 4-1/2" Nipple	1
3	1-1/4" 90° Elbow	3
4	1-1/4" Close Nipple (1-1/2")	5
5	1-1/4" Union	3
6	1-1/4" x 1-1/4" x 1/2" Tee	3
7	1/4" Square Head Pipe Plug	1
8	1-1/4" x 2" Nipple	5
9	325-3x3/8 Pilot Gas Regulator	1
10	1-1/4" V4055A1007 Hydraulic Actuator and V5055A1012 Valve	1
11	Maxitrol 1-1/2" MR212D Modulating Valve	1
12	1-1/4" Manual Ball Valve	1
13	1-1/4" x 11" Nipple	1
14	1-1/4" x 8" Nipple	1
15	1-1/4" x 2-1/2" Nipple	1
16	1-1/4" Female x 2" Male Adapter	1
17	30" Dual Fuel Midco Burner	1
18	1/4" Brass Elbow	1
19	3/8" Male x 1/4" Female Reducer	2
20	V4046C1021 Solenoid	1
21	3/8" 90° Elbow	2
22	3/8" Close Nipple (1-1/2")	3
23	3/8" x 2" Nipple	1
24	3/8" Manual Ball Valve	1
25	1/2" Male x 3/8" Female Reducer	1
26	1-1/4" 90° Street Elbow	1
27	1-1/2" Male x 1-1/4" Female Reducer	2
28	1/2" Male x 1/4" Female Reducer	2
29	0-35" w.c. or 0-5 psi or 0-15 psi Pressure Gauge (check spec)	1
30	3/8" x 4" Nipple	2
31	3/8" Tee	1
32	1/4" Close Nipple	1
33	1-1/4" K3A672T Solenoid Valve	1
34	-5-15 w.c. Gas Pressure Gauge	1

Gas Train w/Upstream Pilot



NOTES:

Gas Type: Natural or LP
 Inlet Pressure: 7 in. w.c. - 5 psi.
 Max. Natural Gas Manifold Pressure: 5 in. w.c.
 Max. LP Manifold Pressure: 2.5 in. w.c.

External High Gas Pressure Regulator Required when gas pressure exceeds 5 psi.
 P/N = 143-80-2-1.25-BW-1/2 (10 psi. max.)

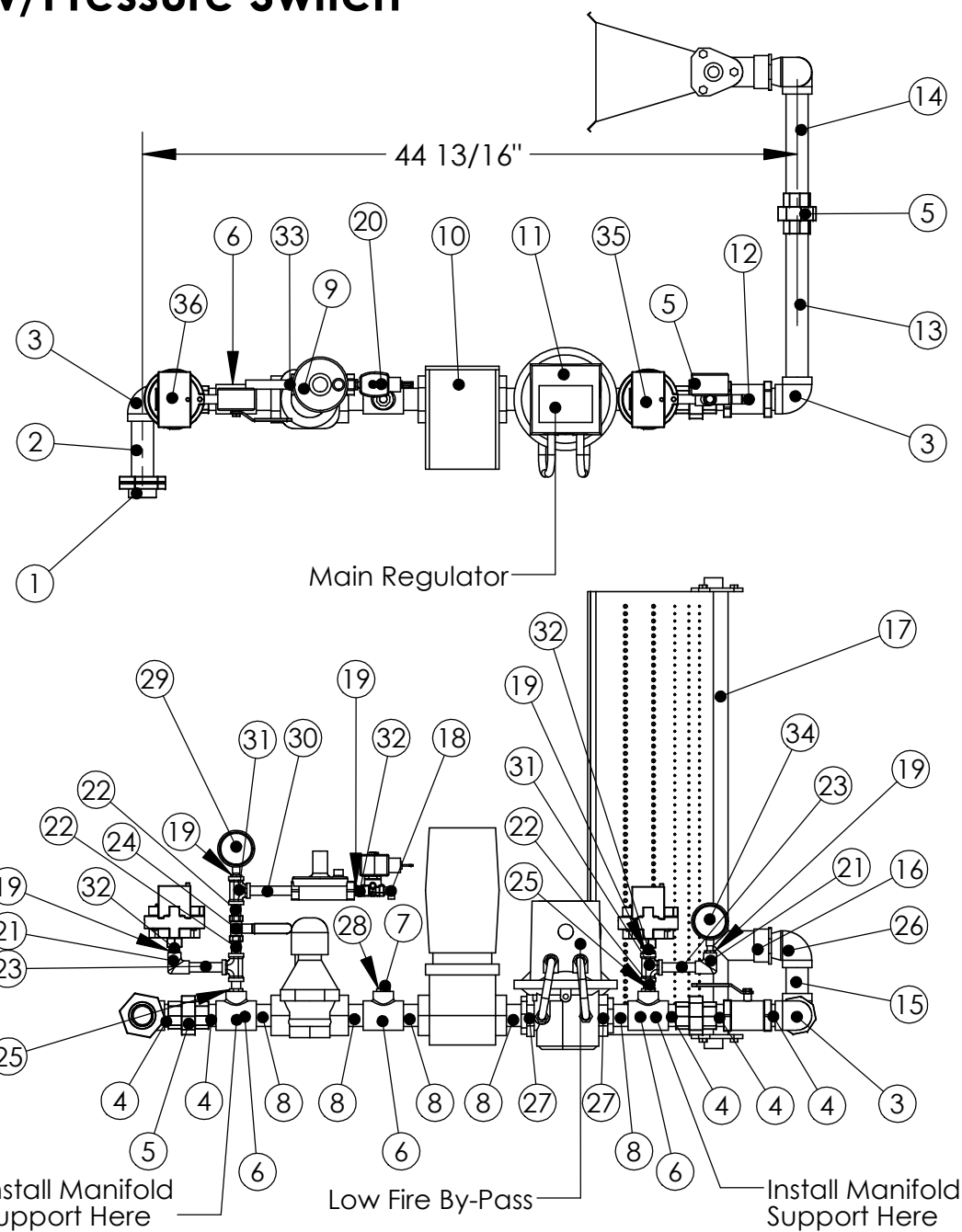
Item #10 is replaced by V4055D1019 and V5055C1042 for Proof of Closure Applications

Material: N/A	Part Number: N/A	Unless Otherwise Specified Dimensions are in Inches.
Blank Size: N/A x N/A	MACOLA/AX Number:	
Weight: N/A lbs	Drawing Name: DF 4 30 Gas Train	
CONFIDENTIAL	Drawn By: DDH	
	Parent Assembly: DF 4	
	Sheet: 4 of 5	Standard Tolerances are: Fractions: ±1/16 Decimal: .XX±.05 .XXX±.015 Angles: ±1°

BILL OF MATERIALS

ITEM NUMBER	Description	Quantity
1	1-1/4" Quick Seal	1
2	1-1/4" x 4-1/2" Nipple	1
3	1-1/4" 90° Elbow	3
4	1-1/4" Close Nipple (1-1/2")	5
5	1-1/4" Union	3
6	1-1/4" x 1-1/4" x 1/2" Tee	3
7	1/4" Square Head Pipe Plug	1
8	1-1/4" x 2" Nipple	5
9	325-3x3/8 Pilot Gas Regulator	1
10	1-1/4" V4055A1007 Hydraulic Actuator and V5055A1012 Valve	1
11	Maxitrol 1-1/2" MR212D Modulating Valve	1
12	1-1/4" Manual Ball Valve	1
13	1-1/4" x 11" Nipple	1
14	1-1/4" x 8" Nipple	1
15	1-1/4" x 2-1/2" Nipple	1
16	1-1/4" Female x 2" Male Adapter	1
17	30" Dual Fuel Midco Burner	1
18	1/4" Brass Elbow	1
19	3/8" Male x 1/4" Female Reducer	5
20	V4046C1021 Solenoid	1
21	3/8" 90° Elbow	2
22	3/8" Close Nipple (1-1/2")	4
23	3/8" x 2" Nipple	2
24	3/8" Manual Ball Valve	1
25	1/2" Male x 3/8" Female Reducer	2
26	1-1/4" 90° Street Elbow	1
27	1-1/2" Male x 1-1/4" Female Reducer	2
28	1/2" Male x 1/4" Female Reducer	1
29	0-35" w.c. or 0-5 psi or 0-15 psi Pressure Gauge (check spec)	1
30	3/8" x 4" Nipple	1
31	3/8" Tee	3
32	1/4" Close Nipple	3
33	1-1/4" K3A672T Solenoid Valve	1
34	-5-15 w.c. Gas Pressure Gauge	1
35	Optional Antunes HGP-A M1 Pressure Sw itch	1
36	Optional Antunes LGP-A M1 Pressure Sw itch	1

Gas Train Upstream Pilot w/Pressure Switch



NOTES:
 Gas Type: Natural or LP
 Inlet Pressure: 7 in. w.c. - 5 psi.
 Max. Natural Gas Manifold Pressure: 5 in. w.c.
 Max. LP Manifold Pressure: 2.5 in. w.c.

External High Gas Pressure Regulator Required when gas pressure exceeds 5 psi.:
 P/N = 143-80-2-1.25-BW-1/2 (10 psi. max.)

Item #10 is replaced by V4055D1019 and V5055C1042 for Proof of Closure Applications

Material: N/A
 Blank Size: N/A x N/A
 Weight: N/A lbs

Part Number: N/A
 MACOLA/AX Number:
 Drawing Name: DF 4 30 Gas Train
 Drawn By: WBG
 Parent Assembly: DF 4 30
 Sheet: 5 of 5

Unless Otherwise Specified Dimensions are in Inches.
 Standard Tolerances are:
 Fractions: ±1/16
 Decimal: .XX ±.05
 .XXX ±.015
 Angles: ±1°

CONFIDENTIAL