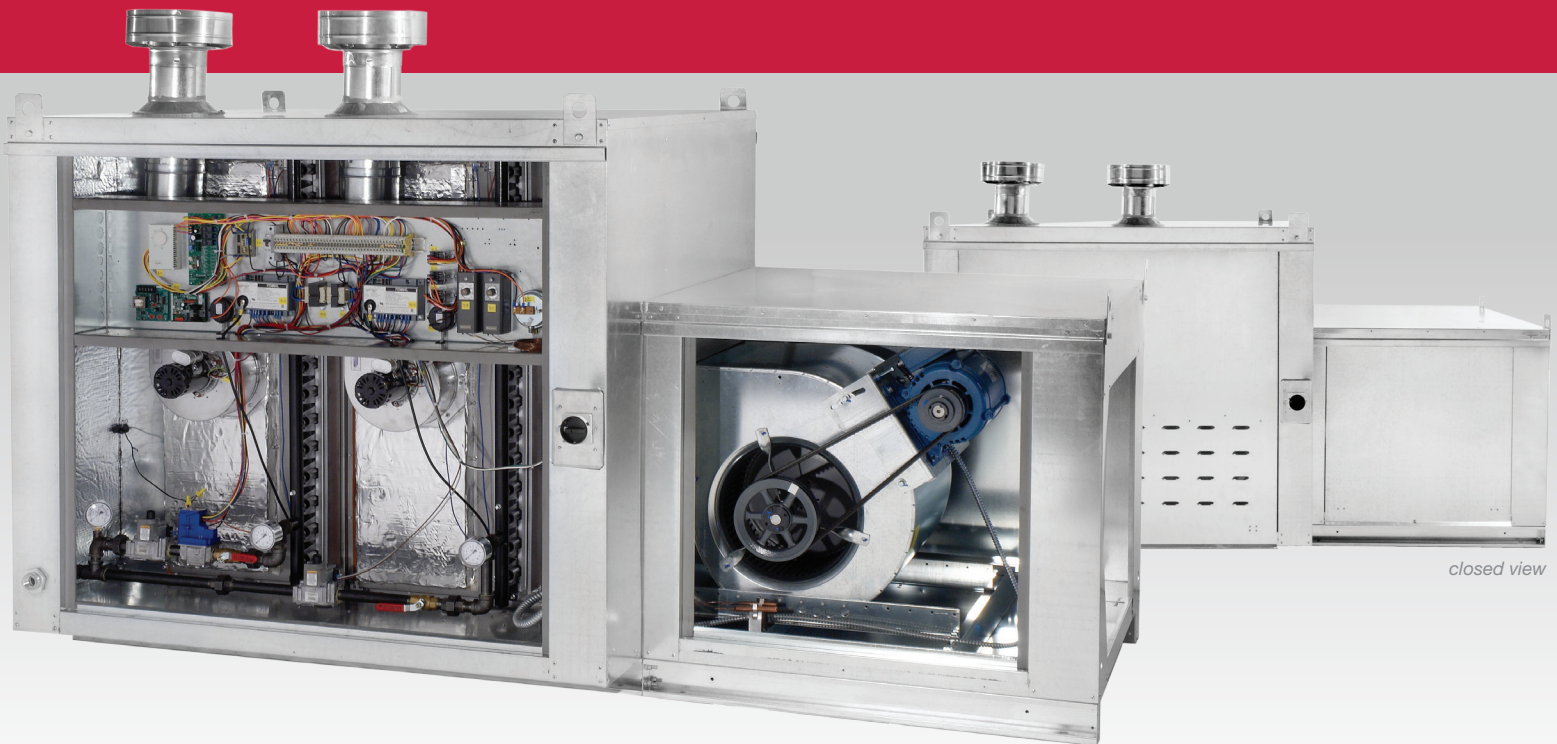


# MODULAR INDIRECT FIRED BENT TUBE HEATER (IBT)



closed view

The Modular Indirect Fired Bent Tube Heater (Model IBT) is designed to deliver clean air into an indoor environment. The push-through design of the unit ensures that combustion fumes will not enter the fresh air stream being delivered into the space.

The standard unit includes a blower module and the indirect heater module with multiple options for discharge and intake. Five housing sizes are available in our modular design with up to four furnaces available in one unit. The air volume range is from 800 to 15,000 CFM and up to a maximum of 3 inches wg. for static pressure.

## FEATURES & BENEFITS

- ETL Listed
- Modular Design for Added Flexibility
- Bent Tube In-Shot Style Furnace with Type 409 Stainless-Steel Heat Exchanger
- High Turndown Ratio Ranging from 6:1 to Maximum of 28:1
- Fully Modulating Gas Output Control Standard
- Constant 83% Efficiency Over Entire Gas Firing Range — Variable Power-Vent Blower Speed Control
- Standard High Fire Start to Ensure Optimum Light-Off
- Standard Inlet & Manifold Pressure Gauges
- Light Weight Design with Condensed Footprint
- Isolated & Insulated Electrical Controls Vestibule
- Fully Insulated Cabinet and Power-Venter Post Purge for Condensation Prevention
- End Discharge or Integral Down Discharge
- Option for Dedicated Combustion
- Discharge, Space or Building Automation System (BAS) Temperature Control

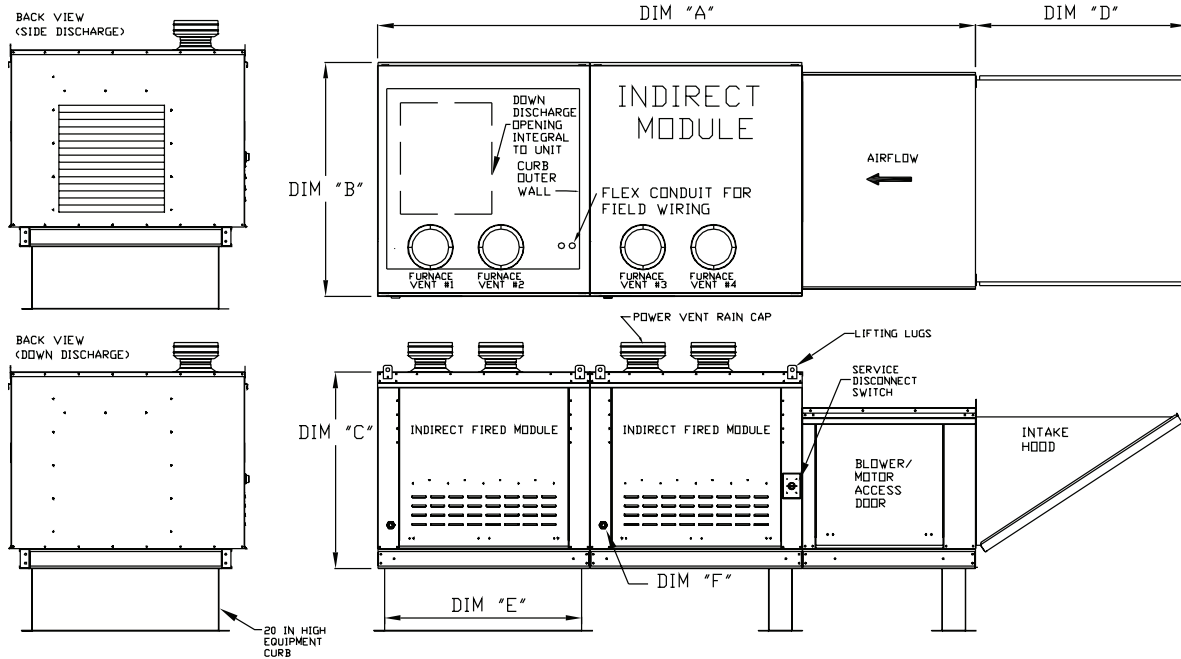
## ADDITIONAL OPTIONS

- 5:1 Turndown for Propane (LP) to Maximum of 23:1
- Blower on Delay for Heat Exchanger Reheat
- Motorized Intake Damper
- Single Point Electrical Connection
- Freeze-stat Option
- Roof Curbs or Indoor Hanging Cradle
- Variable Air Volume (VAV) Controls

## CERTIFICATIONS

- The unit is listed to the ANSI Z83.8-2006 and CSA 2.6-2006 standards.
- The furnace is certified by the American Gas Association and approved by the Canadian Gas Association.

# MODULAR INDIRECT FIRED BENT TUBE HEATER (IBT)



Model	Weight (lbs)	Unit Dimensions <i>(all dimensions nominal &amp; given in inches)</i>						BTU Range* (MBH)			Turndown Ratio	Gas Pressure	
		A	B	C	D	E	F (NPT)	Burner Input	BTU Low	BTU High		Min	Max
A1-IBT 150-G10	817	92-1/4	49-1/2	39-9/16	44-3/8	71	3/4	150	20.8	124.5	6	7" WC	14" WC
A1-IBT 200-G10	847	92-1/4	49-1/2	39-9/16	44-3/8	71	3/4	200	27.7	166	6	7" WC	14" WC
A1-IBT 300-150-150-G10	902	92-1/4	49-1/2	39-9/16	44-3/8	71	3/4	300	20.8	249	12	7" WC	14" WC
A1-IBT 400-200-200-G10	976	92-1/4	49-1/2	39-9/16	44-3/8	71	3/4	400	27.7	332	12	7" WC	14" WC
A2-IBT 200-G15	1020	100-1/4	49-1/2	39-9/16	53-5/8	79	1	200	27.7	166	6	7" WC	14" WC
A2-IBT 300-G15	1112	100-1/4	49-1/2	53-7/8	53-5/8	79	1	300	41.5	249	6	7" WC	14" WC
A2-IBT 400-G15	1191	100-1/4	49-1/2	53-7/8	53-5/8	79	1	400	55.3	332	6	7" WC	14" WC
A2-IBT 400-200-200-G15	1079	100-1/4	49-1/2	39-9/16	53-5/8	79	1	400	27.7	332	12	7" WC	14" WC
A2-IBT 600-300-300-G15	1233	100-1/4	49-1/2	53-7/8	53-5/8	79	1	600	41.5	498	12	7" WC	14" WC
A2-IBT 800-400-400-G15	1346	100-1/4	49-1/2	53-7/8	53-5/8	79	1	800	55.3	664	12	7" WC	14" WC
A3-IBT 400-G18	1472	105-1/4	57-3/4	57-1/16	51-5/8	84	1	400	55.3	332	6	7" WC	14" WC
A3-IBT-600-300-300-G18	1590	105-1/4	57-3/4	57-1/16	51-5/8	84	1	600	41.5	498	12	7" WC	14" WC
A3-IBT 800-400-400-G18	1728	105-1/4	57-3/4	57-1/16	51-5/8	84	1	800	55.3	664	12	7" WC	14" WC
A3-IBT 1000-300-300-400-G18	2467	165-3/8	57-3/4	57-1/16	51-5/8	84	1	1000	41.5	830	20	7" WC	14" WC
A3-IBT-1200-400-400-400-G18	2579	165-3/8	57-3/4	57-1/16	51-5/8	84	1	1200	55.3	996	18	7" WC	14" WC
A4-IBT-400-920	1882	124-5/16	57-3/4	57-1/16	76-3/8	42	1	400	55.3	332	6	7" WC	14" WC
A4-IBT 800-400-400-920	2099	124-5/16	57-3/4	57-1/16	76-3/8	42	1	800	55.3	664	12	7" WC	14" WC
A4-IBT 1000-300-300-400-920	2982	184-7/16	57-3/4	57-1/16	76-3/8	42	1	1000	41.5	830	20	7" WC	14" WC
A4-IBT 1200-400-400-400-920	3094	184-7/16	57-3/4	57-1/16	76-3/8	42	1	1200	55.3	996	18	7" WC	14" WC
A4-IBT 1400-300-300-400-400-920	3206	184-7/16	57-3/4	57-1/16	76-3/8	42	1	1400	41.5	1162	28	7" WC	14" WC
A4-IBT 1600-400-400-400-400-920	3318	184-7/16	57-3/4	57-1/16	76-3/8	42	1	1600	55.3	1328	24	7" WC	14" WC
A5-IBT 800-400-400-925	2587	134-5/16	66-3/8	59-15/16	71-3/8	52-3/4	1	800	55.3	664	12	7" WC	14" WC
A5-IBT 1000-300-300-400-925	3359	194-7/16	66-3/8	59-15/16	71-3/8	52-3/4	1	1000	41.5	830	20	7" WC	14" WC
A5-IBT 1200-400-400-400-925	3471	194-7/16	66-3/8	59-15/16	71-3/8	52-3/4	1	1200	55.3	996	18	7" WC	14" WC
A5-IBT 1400-300-300-400-400-925	3583	194-7/16	66-3/8	59-15/16	71-3/8	52-3/4	1	1400	41.5	1162	28	7" WC	14" WC
A5-IBT 1600-400-400-400-400-925	3695	194-7/16	66-3/8	59-15/16	71-3/8	52-3/4	1	1600	55.3	1328	24	7" WC	14" WC

\*All models are fully electronically modulating.