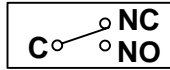


SPECIFICATIONS: SWITCHING ELEMENT "B"

- 1.0 Mounting Position: Diaphragm Vertical (See Diagram Below).
- 2.0 Set Point (Sealed): Factory Set @ .15" +.00" / -.10" w.c. Pressure Fall Vertical Plane
- 3.0 Approximate Switching Differential: Progressive; Increasing From .02 ± .01" w.c. at Minimum Set Point To Approximately .1" w.c. At Maximum Set Point.
- 4.0 Measured Media: Air
- 5.0 Operating Temperature Range: -40° to 176° F (-40.0° C to 80.0° C).
- 6.0 Life: 100,000 Cycles Minimum At ½ PSI Maximum Pressure Each Cycle And At Maximum Electrical Load.
- 7.0 Electrical Rating
- 7.1 300 Va Pilot Duty At 115 to 277 Vac
- 7.2 15a Non-inductive to 277 Vac
- 8.0 Contact Arrangement: SPDT
- 9.0 Position Of Switch Contacts Before Pressure Is Applied:



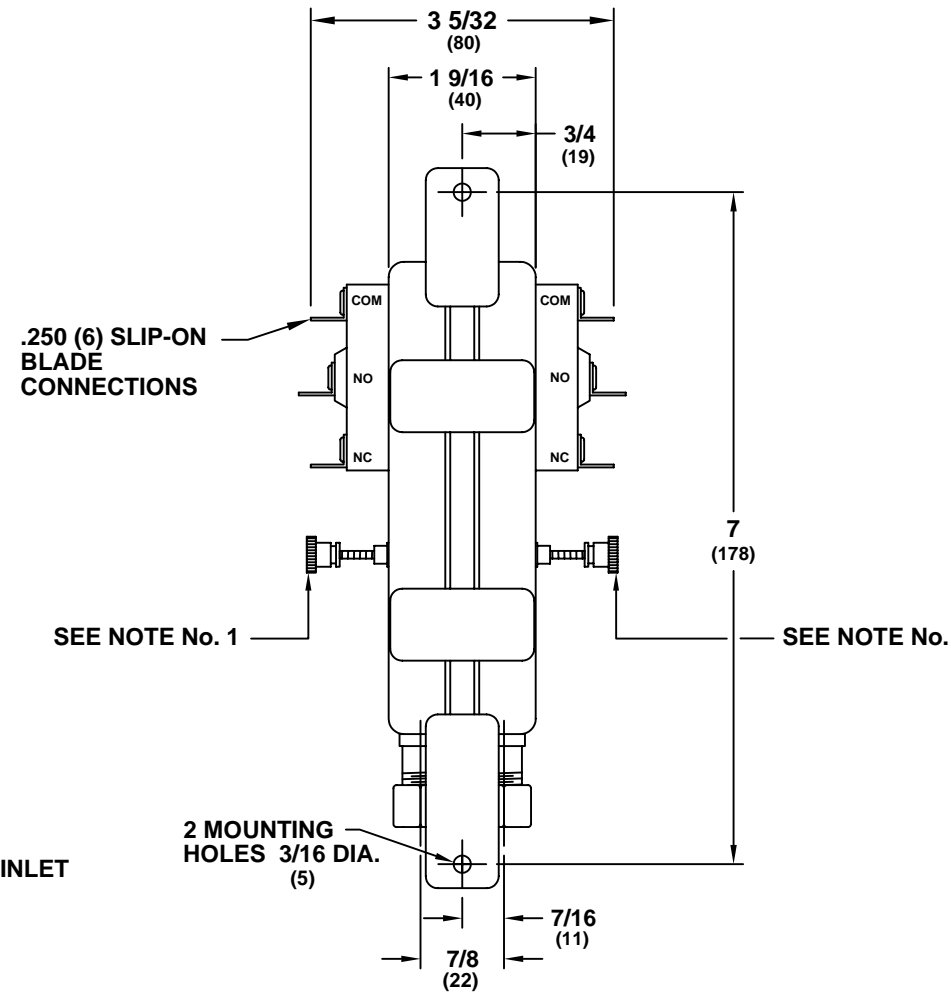
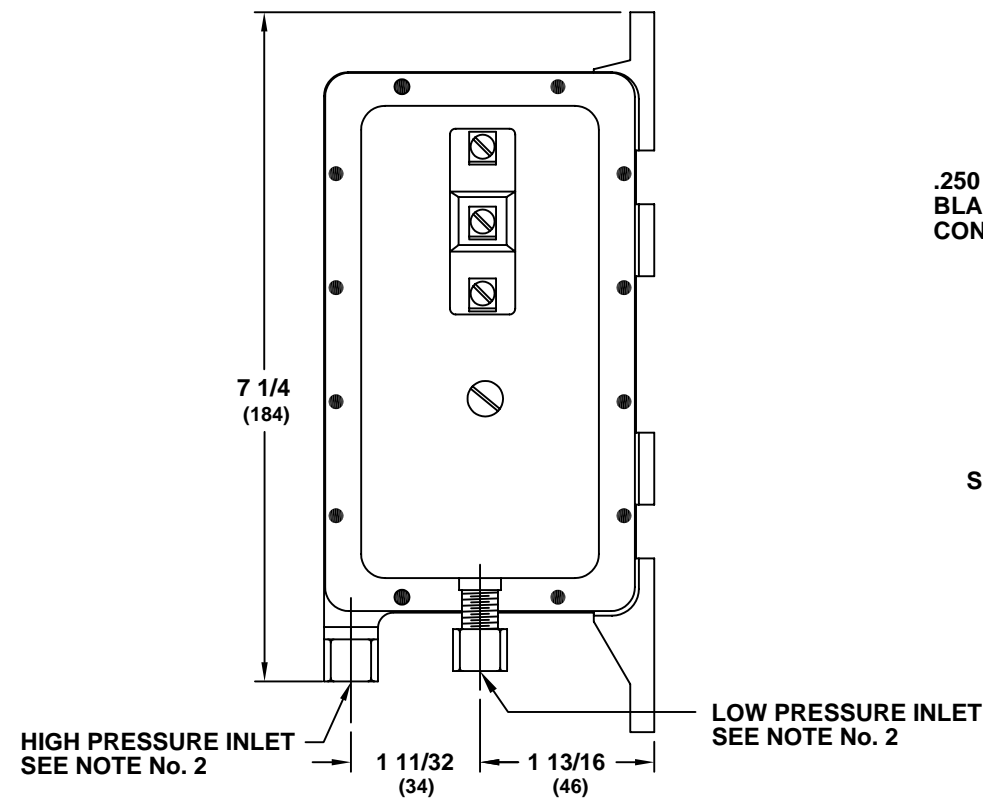
SPECIFICATIONS: SWITCHING ELEMENT "A"

- 1.0 Mounting Position: Diaphragm Vertical (See Diagram Below).
- 2.0 Set Point (Sealed): Factory Set @ 0.80" +.10" / -.00" w.c. Pressure Fall Vertical Plane.
- 3.0 Approximate Switching Differential: Progressive; Increasing From .02 ± .01" w.c. at Minimum Set Point To Approximately .1" w.c. At Maximum Set Point.
- 4.0 Measured Media: Air
- 5.0 Operating Temperature Range: -40° to 176° F (-40.0° C to 80.0° C).
- 6.0 Life: 100,000 Cycles Minimum At ½ PSI Maximum Pressure Each Cycle And At Maximum Electrical Load.
- 7.0 Electrical Rating
- 7.1 300 Va Pilot Duty At 115 to 277 Vac
- 7.2 15a Non-inductive to 277 Vac
- 8.0 Contact Arrangement: SPDT
- 9.0 Position Of Switch Contacts Before Pressure Is Applied:

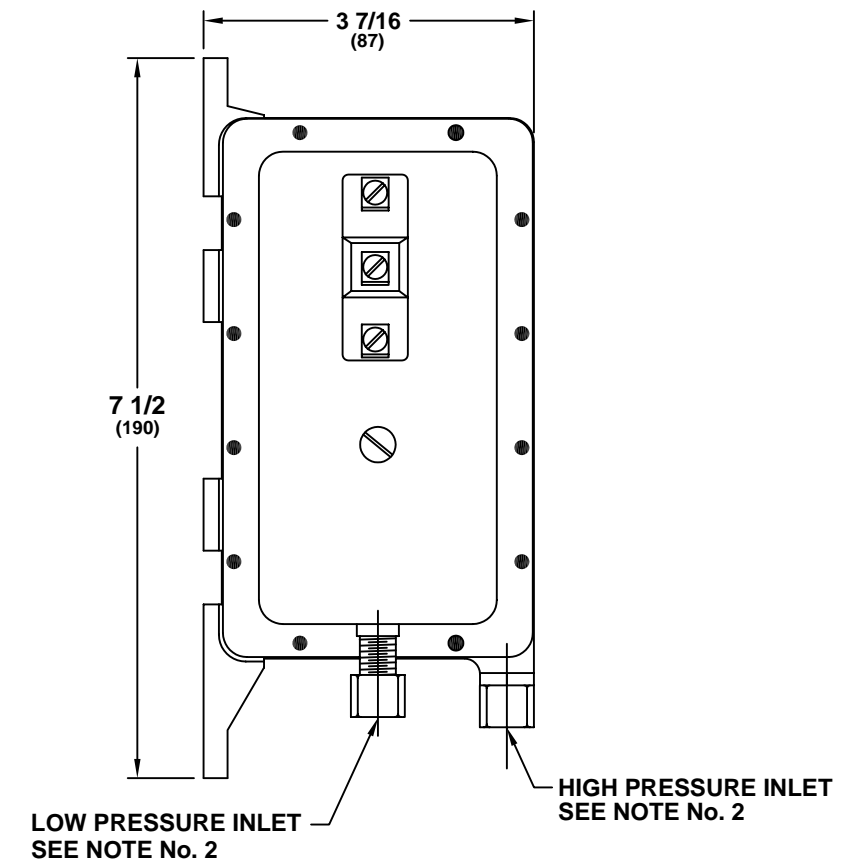


**DIMENSIONS
INCHES
(METRIC)**

SWITCHING ELEMENT "B"



SWITCHING ELEMENT "A"



NOTES:

- 1. External Adjustment Screw - Sealed
- 2. Sample Line Connectors, (1) High Pressure and (2) Low Pressure, Complete With Nut and Ferrule Will Accept 1/4" OD Tubing ie Copper, Aluminum or Plastic.
- 3. Approval or Recognition By: U.L. File MH6213; and C.S.A. File LR18754.

REV					DCN No.					DATE					BY					CHKD																													
DRAWING RELEASE No.										3589																																							
DWN										MJA										11/21/05										FL																			
CHKD										FL										11/21/05										NONE																			
SCALE										NONE										.XX = ±.015										.XXX = ±.005										ANGLES = 1									
SENSING SWITCH SPECIFICATIONS CAPTIVE AIR															CLEVELAND CONTROLS MODEL: DDP-106-313																																		
																														Cleveland Controls Division of UniControl Inc.										1111 Brookpark Rd. Cleveland, Ohio 44109-5825					USED ON				
B20741-313															REV																																		