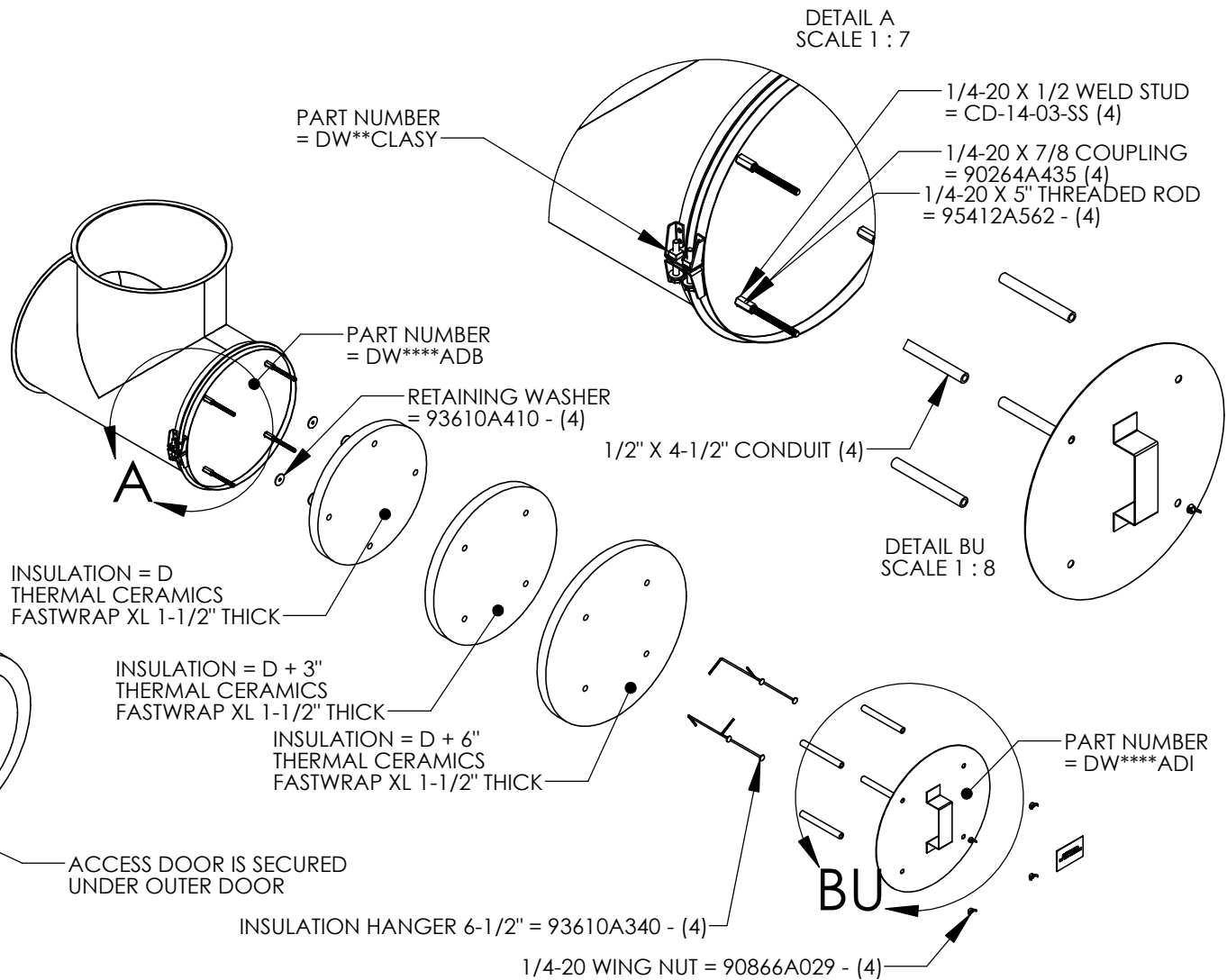
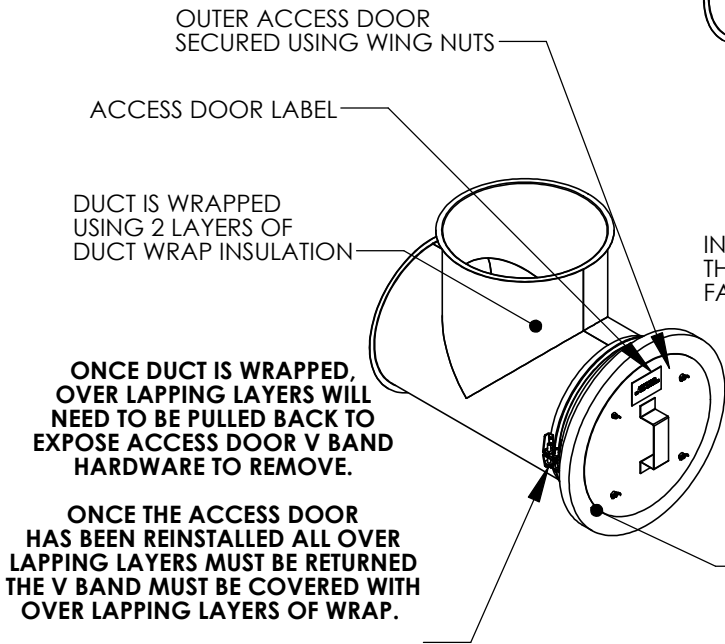


Insulation Instruction For Grease Duct Access Door

INFORMATION TABLE

Duct Diameter	Assembly Part Number	Access Door Part Number	Access Door Blank Part Number
8"	DW0809ADIASY	DW0809ADI	DW0809ADB
10"	DW1011ADIASY	DW1011ADI	DW1011ADB
12"	DW1213ADIASY	DW1213ADI	DW1213ADB
14"	DW1415ADIASY	DW1415ADI	DW1415ADB
16"	DW1617ADIASY	DW1617ADI	DW1617ADB
18"	DW1819ADIASY	DW1819ADI	DW1819ADB
20"	DW2021ADIASY	DW2021ADI	DW2021ADB
22"	DW2223ADIASY	DW2223ADI	DW2223ADB
24"	DW2425ADIASY	DW2425ADI	DW2425ADB
30"	DW3031ADIASY	DW3031ADI	DW3031ADB
36"	DW3637ADIASY	DW3637ADI	DW3637ADB



Assembly Instruction:

1. Select parts ADB and ADI from the listed per required duct diameter.
2. Stud weld (4) CD-14-03-SS studs to the selected ADB part, use locating template and 10S stud gun.
3. Secure 1/4-20 couplings to the studs and 1/4-20 x 5" threaded rod to the other side of the coupling, make sure hardware is tight.
4. Cut 3 pieces of insulation, see details above, the insulation should be sealed using Aluminum Tape.
5. Conduits 1/2" x 4-1/2" are placed over the 1/4-20 threaded rods, ADI holes are aligned and secured with wing nuts.
6. Conduit is sandwiched between the ADB and ADI, conduit is tack welded (TIG) to the ADI part only.
7. Wing nuts are removed and the ADI part with conduit tack welded is separated from the ADB threaded rods.
8. Insulation hangers are secured to the ADI, they should be placed between conduits.
9. Insulation is attached starting with the largest to smallest diameters, push the insulation over the insulation hangers and conduit.
10. Once all three layers have been impaled push the retaining washers onto the insulation hangers and bend over hangers.
11. Align the ADI conduit with the ADB threaded rod, push the parts together and secure with wing nuts.
12. Apply the **Access Door Label** to ADI.
13. Install the ADB using a standard V clamp.